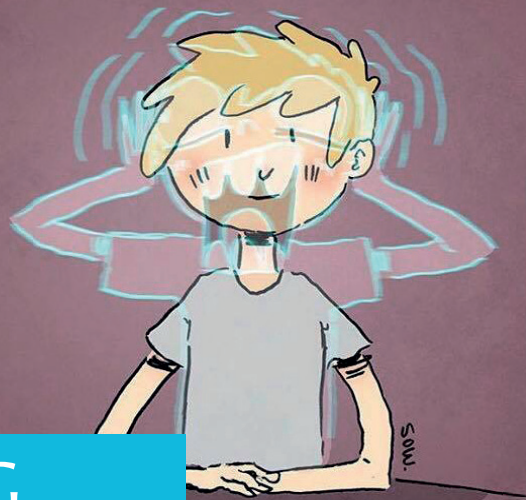


Spare some change  
to change mental  
health for good.



## PAYROLL GIVING

Artwork by a SANE supporter.

### £ 1. What are the benefits?

Donations cost up to 50% less as they are taken before tax, meaning they are the most tax efficient way to support us.

A donation of:	£5	£10	£20
Will cost a 20% tax payer	£4	£8	£16
Will cost a 40% tax payer	£3	£6	£12
Will cost a 50% tax payer	£2.50	£5	£10

### 2. Do you have an agency?

Before getting started, employers need to be signed up with an approved payroll giving agency. Why not get in touch with Charitable Giving, Charities Aid Foundation or Charities Trust? For more information please take a look at the HMRC website.

### ? 3. How to get things started.

We will provide everything you need to promote your campaign and make it a success. Our payroll giving pack contains posters, leaflets, template intranet articles and other fun goodies.

### ★ 4. Matched giving.

Help make your donation go further by encouraging your employer to match the value of your donation. Or you could even hold an inter-departmental competition to see which department can obtain the most sign ups at particular points in the year like Mental Health Awareness Week in May or World Mental Health Awareness Day on 10th October.

### 📖 5. Celebrating the milestones.

The Payroll Giving Quality Mark Awards recognise employers who have worked hard to promote payroll giving. The awards are categorised as follows:

Bronze – 2.5% uptake   Silver – 5% uptake   Gold – 10% uptake

Platinum – Employers who demonstrate a continued commitment to increasing donations.

Diamond – Employers with at least 30% uptake plus payment of the Payroll Giving Agency administration charge, matched donations, or demonstration of active promotion of the scheme.

[www.sane.org.uk](http://www.sane.org.uk)

St Mark's Studios, Chillingworth Road, Islington, London N7 8QJ

☎ 0203 805 1790   📧 @charitySANE   📺 @charitySANE   📷 @charitySANE

Registered charity number: 296572

